



Threaded steel pipe fittings

Sockets

DIN
2986

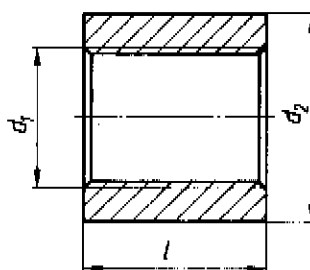
Stahlfittings mit Gewinde; Muffen

As it is current practice in standards published by the International Organization for Standardization (ISO), the comma has been used throughout as a decimal marker.

This standard conforms to International Standard ISO 50

Steel sockets screwed in accordance with ISO Recommendation R 7, minimum lengths

Dimensions in mm



Designation of a welded, black socket of nominal size 40, with R 1 1/2 pipe thread:

Socket DIN 2986 - 1 1/2

Designation of the same socket, but seamless and with a galvanized (nv) finish:

Socket DIN 2986 - 1 1/2 - nv

Nominal size DN	Corresponding pipe thread d_1	Outside diameter d_2 min.	Length l min.
6	R 1/8	14	17
8	R 1/4	18,5	25
10	R 3/8	21,3	26
15	R 1/2	26,4	34
20	R 3/4	31,8	36
25	R 1	39,5	43
32	R 1 1/4	48,3	48
40	R 1 1/2	54,5	48
50	R 2	66,3	56
65	R 2 1/2	82	65
80	R 3	95	71
100	R 4	122	83
125	R 5	147	92
150	R 6	174	92

Continued on page 2

18.3.09

The nominal sizes of the sockets conform to those of the corresponding threaded pipes dealt with in DIN 2440 and DIN 2441 which comply with the dimensional specifications laid down in International Standard ISO 65.

The minimum lengths of the sockets have been determined from the following formula: $l = 2 l_1 + 2 P$

where l is the minimum length of the socket

l_1 is the useful thread length for maximum dimension a as given in DIN 2999 Part 1, November 1975 edition, table 2

P is the pitch of thread

Thread: Whitworth pipe thread as specified in DIN 2999 Part 1

Material: Steel at manufacturer's discretion

Finish: If no special requirements are specified in the order: welded, black
If special requirements are specified in the order: welded, black (gs)
welded, galvanized (gv)
seamless, black (ns)
seamless, galvanized (nv)

The sockets shall be internally chamfered.

Hydraulic pressure test: 75 bar.